



LONDON YOUTH LEAGUE

INFORMATION PACK

2025

PREPARED FOR
24/25 SUMMER TERM

—

This is a comprehensive guide for the London Youth League.

WWW.LONDONYOUTHLEAGUE.COM



ABOUT US

Our Mission: At London Youth League, we're dedicated to delivering a high-level football experience that supports beginners and aspiring players alike. Our goal is to provide a fun, competitive, and supportive environment where young athletes can develop their skills, confidence, and love for the game.

Our Vision: To bridge the gap between grassroots football and professional pathways, ensuring every child has the opportunity to grow as a player and individual.

Our History: Founded with over 35 years of collective coaching, refereeing, and event management experience, London Youth League was born from a passion to fill the void of beginner-friendly leagues in London. Today, we're a thriving community of teams, players, and families united by football.

Our Values: Inclusivity, Sportsmanship, Development, Excellence we compete hard but prioritise enjoyment and fairness in every match.

Our Team: Led by a passionate group of FA-qualified coaches and referees, we bring expertise and enthusiasm to every session, ensuring a top-tier learning experience tailored to each player's needs.





CENTRALISED LOCATION

1

At the London Youth League, we've created a centralised location approach, meaning **all matches** home, away, and cup fixtures are **hosted** at a **single venue for each division**. Unlike traditional leagues where teams travel to various locations across a region, our model brings everyone to one consistent location, streamlining the football experience for all involved.

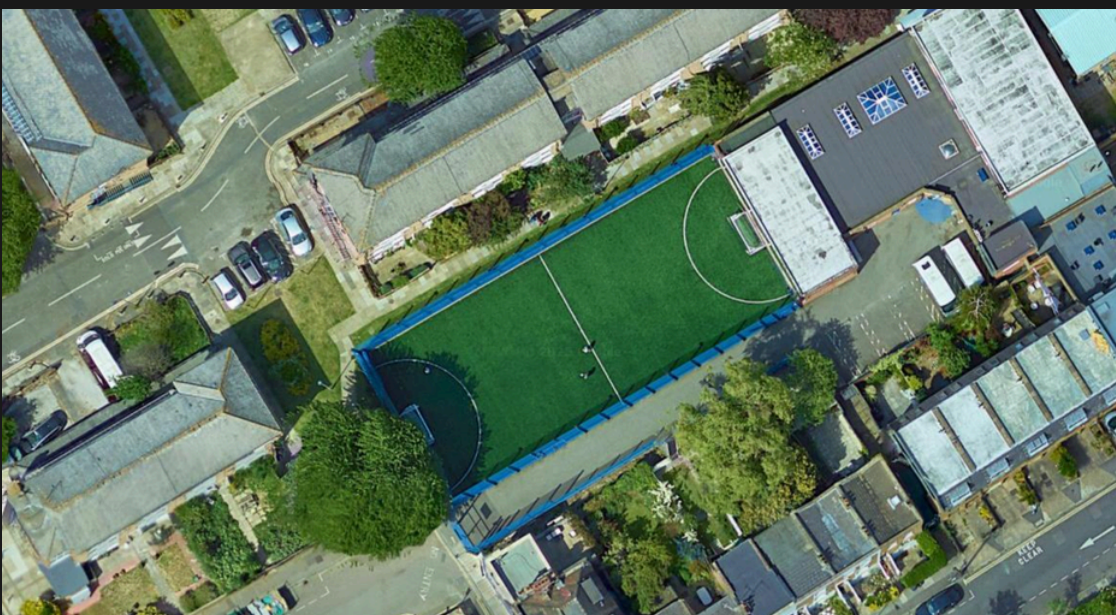
- **Reduced Travel Costs and Logistics:** Eliminates the need for multiple away-game trips, cutting travel expenses and simplifying planning for clubs and families.
- **Consistent Kick-Off Times:** Provides predictable scheduling, allowing clubs, coaches, and parents to rely on stable weekly timings.
- **Enhanced Match-Day Efficiency:** Centralised facilities such as parking, changing rooms, and pitches streamline operations, reducing delays and improving the overall experience.
- **Stronger Community Connections:** Gathers teams at one venue regularly, encouraging relationships and a sense of belonging amongst players, coaches, and supporters.
- **Simplified Fixture Management:** Centralises pitch allocation and maintenance, minimising scheduling conflicts and ensuring consistent playing conditions.

WHERE WE OPERATE

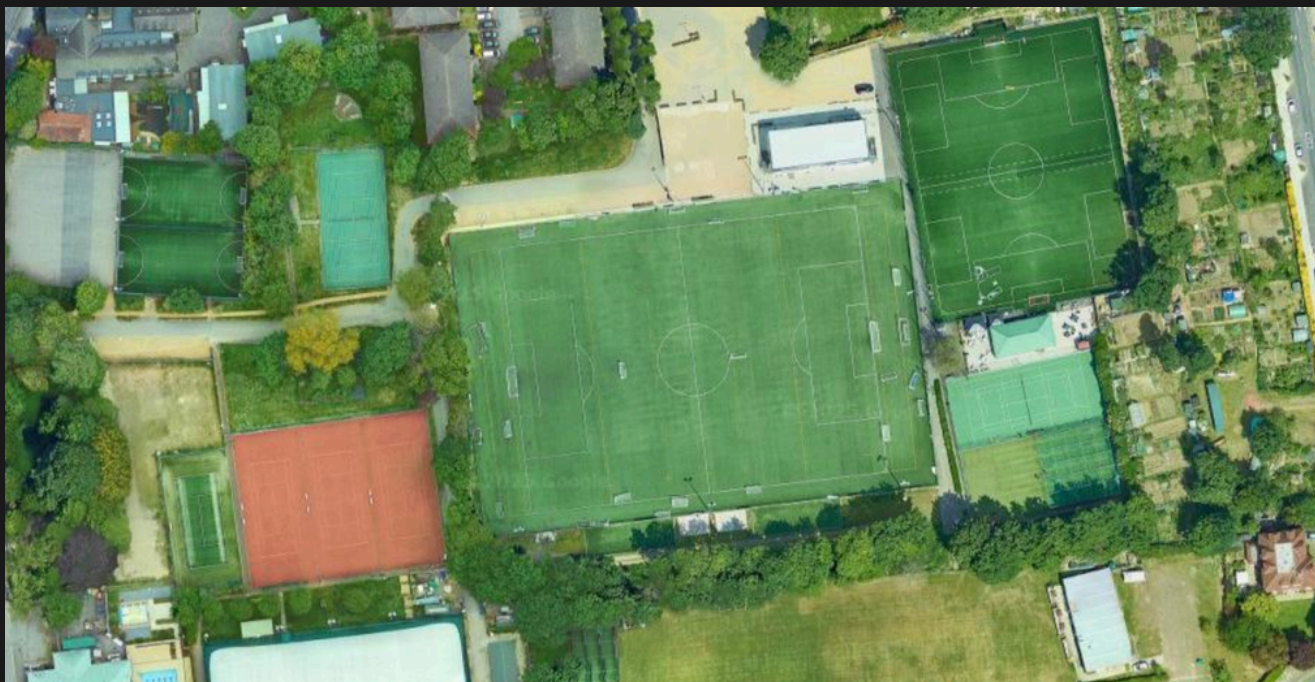
- + COMPETITIVE LEAGUE:** WESTWAY SPORTS CENTRE, W10 6RP (WEST LONDON).



- + DEVELOPMENT LEAGUE:** THE BRUNSWICK CLUB, SW6 7SW (SOUTH WEST LONDON).



+ **ELITE LEAGUE:** CLUB DES SPORTS. W3 7HB,
(WEST LONDON).



NO CANCELLATIONS IN OVER 3 YEARS:

- As part of **our vision** to bridge the gap between grass roots and the professional pathways, we take pride in making sure the LYL on plays on the best **4G Astro surfaces**. This ensures LYL participants have access to football all year round with cancellations due to bad weather or poor playing surfaces.



LEAGUE OVERVIEW



AGE GROUPS:

Our age groups operate from:

U6 - U13



DIVISIONS:

- Development (skill-building focus).
- Competitive (ability-based).
- Elite (Invite Only).



SEASON FORMAT:

Summer Term (COMP/DEV leagues):
26th April to 13th July 2025.

(Elite League invite only):
3rd May to 5th July 2025



MATCH FORMAT:

- U6, U7, U8: 6-aside, 20 minutes each half.
- U9, U10: 7-aside, 25 minutes each half.
- U11, U12: 9-aside, 30 minutes each half.
- U13: 9-aside, 30 minutes each half.
- Roll-on, roll-off substitutions allowed with referee permission during stoppages.



SUMMER TERM SCHEDULE

+ **COMPETITIVE LEAGUE:** (WESTWAY SPORTS CENTRE, W10 6RP)

Saturdays:

- Dates: 26th April - 12th July 2025
- Time: 12:00 - 15:00
- Ages: U7s - U10s

Sundays:

- Dates: 27th April - 13th July 2025
- Time: 13:00 - 17:00
- Ages: U6s - U12s

+ **DEVELOPMENT LEAGUE:** (THE BRUNSWICK CLUB, SW6 7SW)

Saturdays:

- Dates: 26th April - 12th July 2025
- Time: 12:30 - 15:30
- Ages: U8s - U9s

Sundays:

- Dates: 27th April - 13th July 2025
- Time: 09:30 - 14:30
- Ages: U6s - U7s

+ **ELITE LEAGUE (INVITE ONLY):** (CLUB DES SPORTS, W3 7HB)

Saturdays:

- Dates: 3rd May - 5th July 2025
- Time: 09:00 - 13:00
- Ages: U10s - U13s



ENTRY FEES



STANDARD RATE - (COMP/DEV LEAGUE):

- **£500** PER TEAM (£42 PER MATCH).

STANDARD RATE - (ELITE LEAGUE INVITE ONLY):

- (£60 PER MATCH)



MULTI-TEAM DISCOUNT:

- **£450** PER TEAM (COMP/DEV LEAGUES) FOR CLUBS **ENTERING 2 OR MORE** SQUADS.



CLUBS PLEASE NOTE:

- **INCLUDED IN FEE:** VENUE HIRE, REFEREES, AND LEAGUE ADMINISTRATION.
- **TEAM LIMIT:** ONLY **1 TEAM PER AGE GROUP** PER CLUB.



REGISTRATION PROCESS

- 1 Apply via website or email.
 - 2 Submit team and player details.
 - 3 Pay the team fee (£499.99 or £450 for multiple teams).
 - 4 Receive fixtures and confirmation.
-

Fixtures & Scheduling:

- Centralised scheduling, shared monthly via our provider Tournify.

Rules & Guidelines:

- FA aligned rules with small-sided games and roll-on substitutions.
- FA Code of conduct for all participants.

HIGHLIGHTS

WINTER TERM

SPRING TERM

SUMMER TERM





2025

GET IN TOUCH



+ +44 7387 445291

+ @THELONDONYOUTHLEAGUE

+ INFO@LONDONYOUTHLEAGUE.COM

+ WWW.LONDONYOUTHLEAGUE.COM